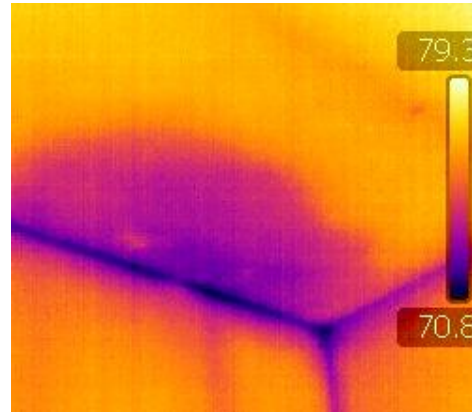


## Moisture Intrusion Mapping

Water and moisture-induced damage can literally “kill” a building; it is a leading cause of degradation of major building components and can cause health ailments.



**Moisture intrusion** is defined as liquid water or water vapour entering into or moving through your building or dwelling. Moisture can enter your building in many ways:

- ◆ Moist air leaking through cavities such as walls or holes in the building envelope
- ◆ Flood seepage from runoff or rising groundwater
- ◆ Human activities such as washing, cooking
- ◆ Condensation on cool surfaces
- ◆ Leaks and ice-damming from roof
- ◆ Plumbing leaks

Water-induced damage is the leading cause of degradation (strength loss) of major building components causing structural and aesthetic problems such as:

- ◆ Metal corrosion
- ◆ Brick and stone spalling
- ◆ Structural wood decay
- ◆ Expansive soil causing foundation cracking
- ◆ Undermining the foundation footing

Uncontrolled moisture can also cause health ailments for building occupants (e.g. see mould). Often building owners try to correct building moisture failure by excess cooling to dehumidify, or over-heat to dry the area affected.

### Good reasons to protect yourself and your building from moisture

Resale value – Damp or leaky dwellings are more difficult to sell

Appearance – Prolonged moisture will often make the property look deteriorated

Use of space – Most people do not like to spend time in a place that is damp or musty

Indoor air quality - Deteriorating building materials may release poisonous VOC's

Mould and Allergens – These feed off moisture and affect the health of occupants

**Our moisture mapping service covers active moisture problems and can flag property vulnerability to future water damage.**